

DESCRIPTION

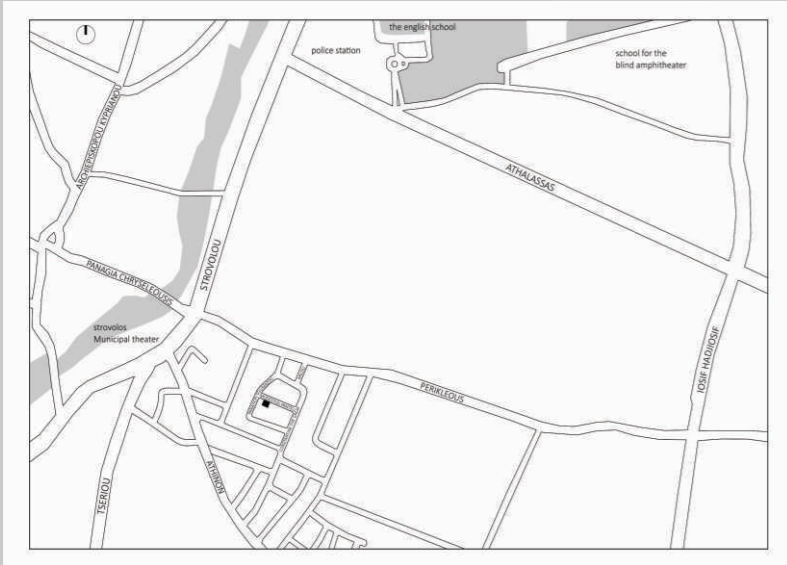
THE PROJECT

The EDEM Project at Modestou Panteli street is located in the heart of new Strovolos , just off Strovolos Avenue.

The project is located within walking distance from the Strovolos Municipality and Theatre and only minutes away from schools, parks, shops, cafes and restaurants.

The EDEM project is a contemporary building, comprising of well designed four, 2-bedroom and two, 1 Bedroom flats and an additional, magnificent penthouse with big terrace/ roof garden and excellent views. The architecture of the building is based on contemporary trends incorporating functional design and attention to details. Materials used on the building facade are HPL, fair-faced concrete and thermoprosopsis.

MAP



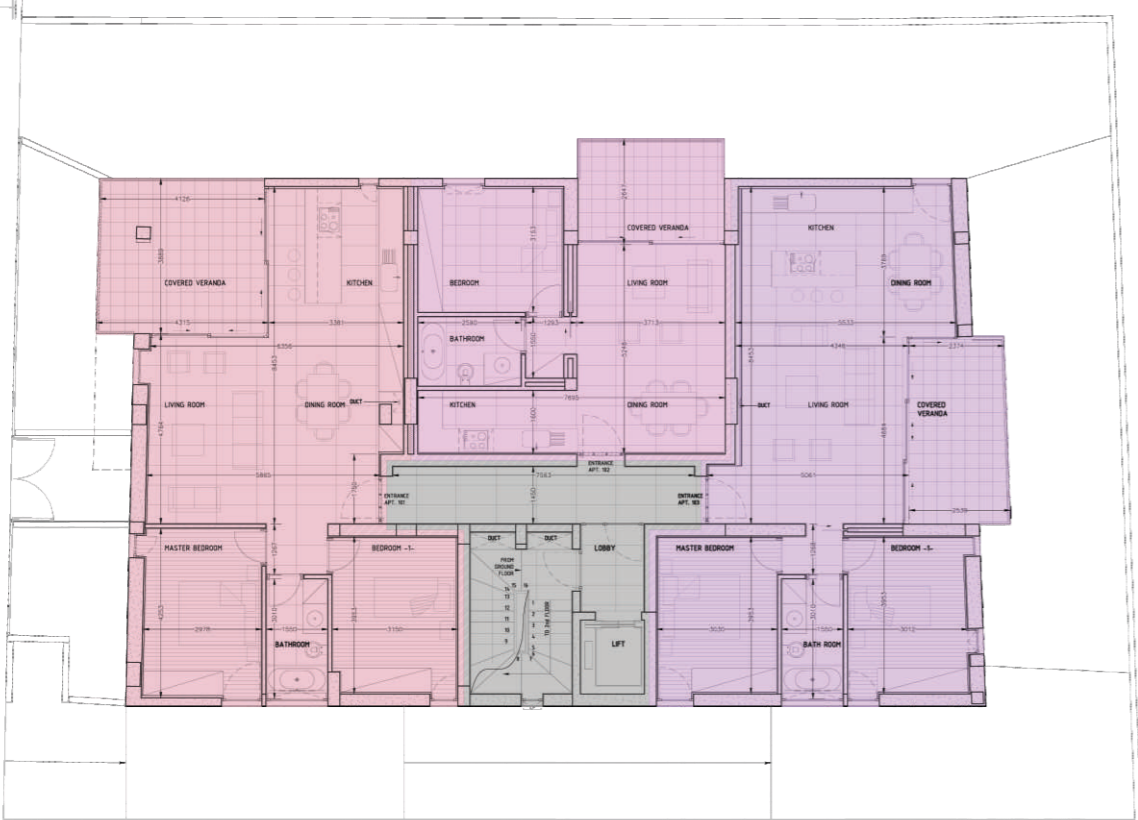


Ground Floor



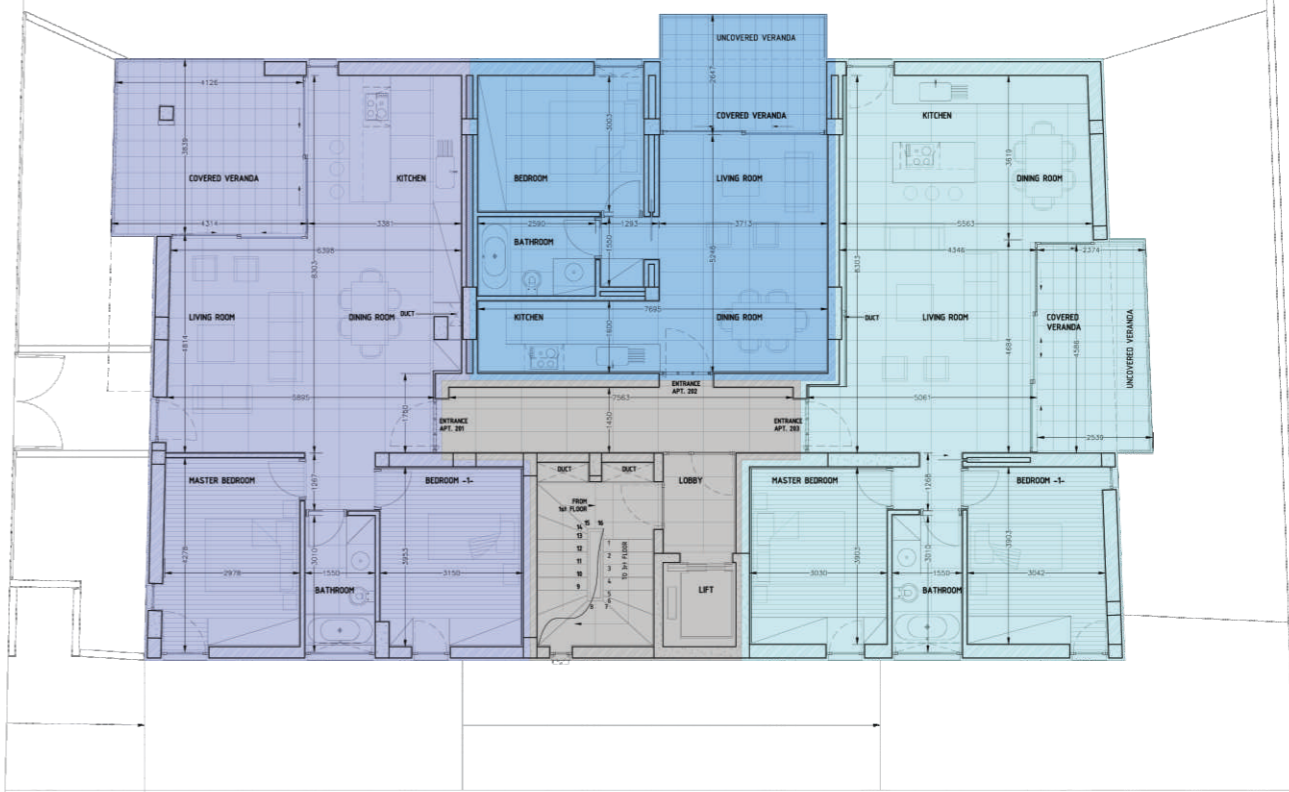
GROUND FLOOR

1st Floor



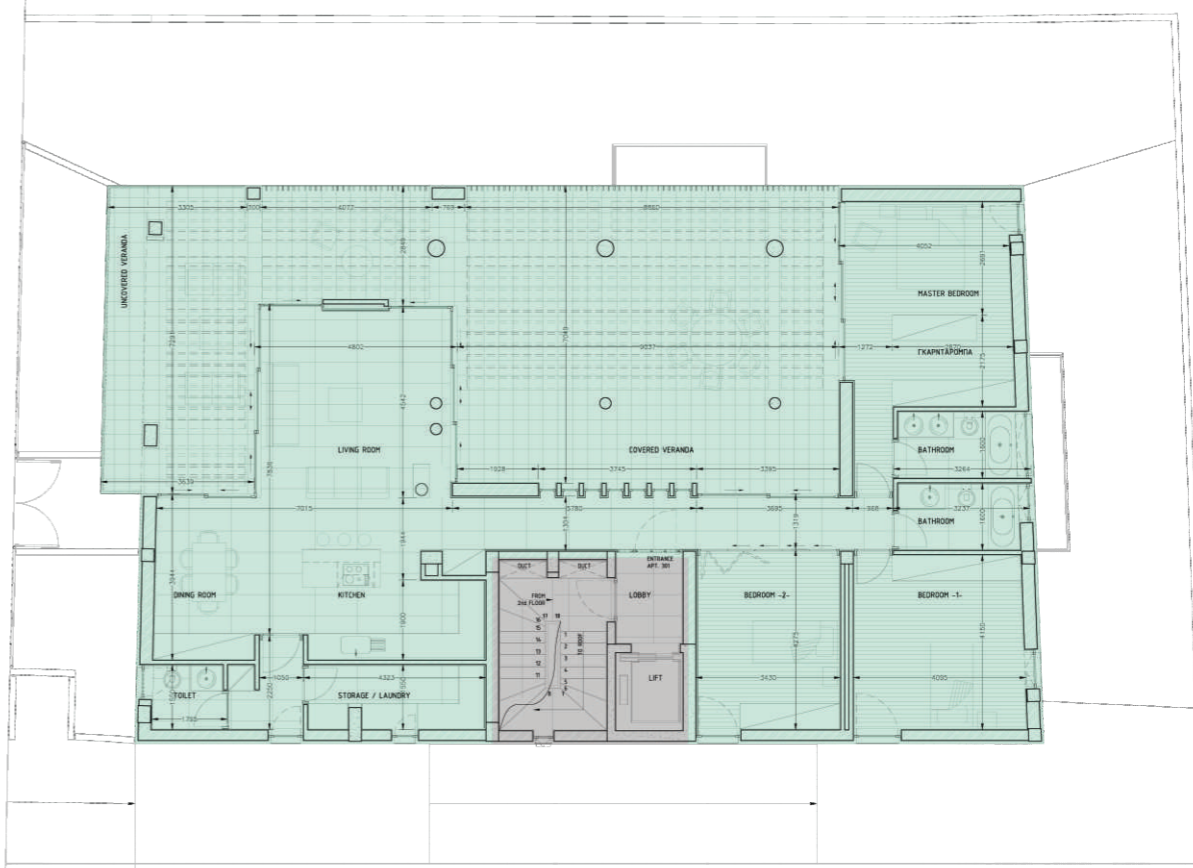
1st FLOOR

2nd Floor



2nd FLOOR

3rd Floor



3rd FLOOR